

## 2nd B♭ CORNET

## MARY POPPINS

## SELECTION

R. M. Sherman -  
R. B. Sherman

## "FEED THE BIRDS"

Slowly, but not dragging

16

## "A SPOONFUL OF SUGAR"

Moderately, with ease



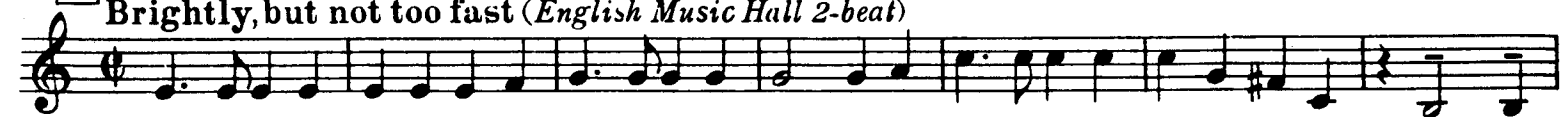
25

Gradually faster and faster

3

*a tempo*

33

Brightly, but not too fast (*English Music Hall 2-beat*)

41

*cresc.**ff*

2



51

*a tempo**mf**ff*

59

3



67

Moderately Bright Waltz Tempo (*in 1*)

75

## "I LOVE TO LAUGH"

Soli

3



91

1



Copyright © 1963 by Wonderland Music Company, Burbank, Calif.

This arrangement Copyright c 1964 by Wonderland Used by permission

Walt Disney Music Co. Ltd., 52 Maddox Street, London, W.1.

for Holland Chappel &amp; Co. Holland NV, Amsterdam.

authorised edition Molenaar NV Wormerveer

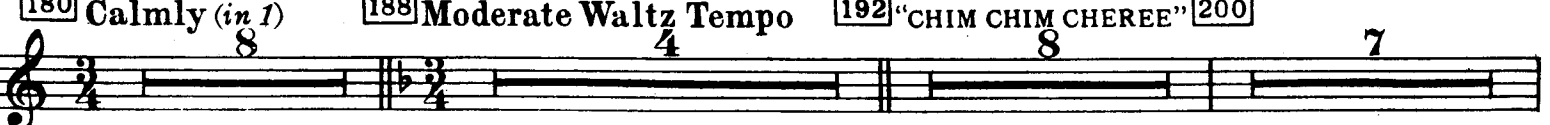
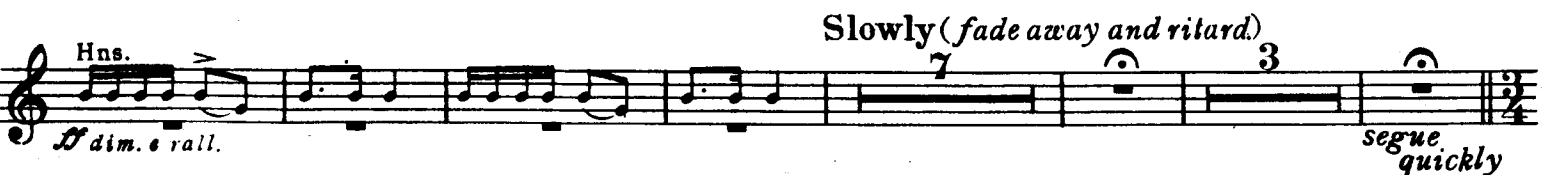
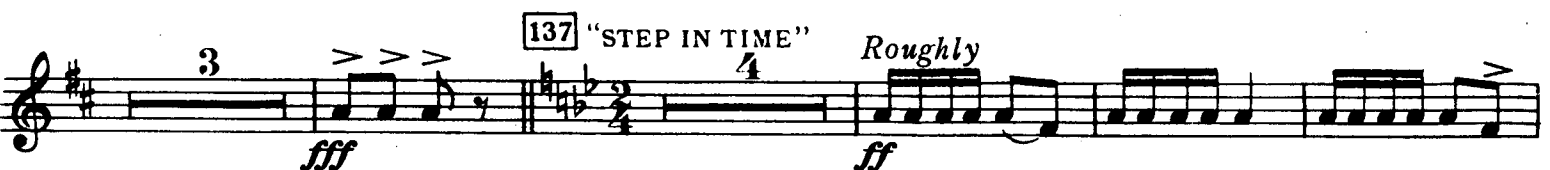
03 1066 08

# 2nd B $\flat$ CORNET

3

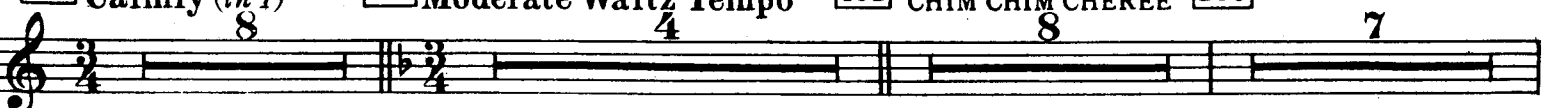


## 105 "SAND DANCE" Soft Shoe Tempo



## 188 Moderate Waltz Tempo

## 192 "CHIM CHIM CHEREE" 200



2nd B♭ CORNET

[212] "SUPERCALIFRAGILISTICEXPIALIDOCIOUS"  
Brightly (in 2)

First staff of music for the 2nd B♭ Cornet part, measures 212-215. The key signature changes from one flat to two sharps. Dynamics include *p* and *f*.

[216]

Second staff of music, measures 216-225. Dynamics include *ff*.

[233]

(VAUDEVILLE TAG)

Third staff of music, measures 233-244. Dynamics include *fff* and *rit.*

[239]

Much Slower (in 4)

[245]

"FEED THE BIRDS"

Moderately Slow Waltz

[261]

Like an Organ-no vibrato-poco rubato

Fourth staff of music, measures 239-261. Includes a 6-measure rest and a 15-measure rest. Dynamics include *mf cresc.*

[277]

15

[292]

accel. to

Fifth staff of music, measures 277-292. Includes a 15-measure rest. Dynamics include *a tempo* and *p*.

[296]

"LET'S GO FLY A KITE"

Moderately Bright Waltz

Sixth staff of music, measures 296-312. Dynamics include *f*.

[313]

Seventh staff of music, measures 313-323. Dynamics include *cresc.*, *ff*, and *fff*.

[324]

Galop

3

[328]

"THE DERBY"

("JOLLY OLIDAY" & "A SPOONFUL OF SUGAR"

PARAPHRASE)

Galop (Presto possible)

Eighth staff of music, measures 324-328. Includes a 3-measure rest and a 4-measure rest. Dynamics include *p cresc.*

## 2nd B♭ CORNET

1

*cresc. molto* *ff*

346 *mf*

353

369

378 *ff*

390 *cresc. molto f*

*ff* *sfff*