

# MARY POPPINS

## SELECTION

R.M. Sherman -  
R.B. Sherman

### "FEED THE BIRDS"

Slowly, but not dragging



### "A SPOONFUL OF SUGAR"

16 Moderately, with ease



25 Gradually faster and faster



33 Brightly, but not too fast (English Music Hall 2-beat)



41

*cresc.*

*ff*

51

*a tempo*

*ff*

*mf*

*ff*

1

59

3

*ff*

67 Moderately Bright Waltz tempo (in 1)



### "I LOVE TO LAUGH"

75

91

3

*mf*

Soli

2

*mf*

105

**"SAND DANCE"**  
Soft Shoe Tempo

1

*f**mf*

109

**"JOLLY 'OLIDAY"**

1

St. mutes

*mf*

2

*mp*

Open

*f*

121

*f* > > > >*f***Allegro con gusto**

129

*rit. e cresc.**ff*

137

**"STEP IN TIME"***ff**ff**ff*

145

2

1

149

*ff**ff*

157

2

160

**Con gusto, a little faster**

1

5

*ff**ff**(dim. e rall.)*

3e TROMBONE C

Slowly (*Fade away and ritard.*)

Segue  
quickly

Calmly (*in 1*)

Moderate Waltz tempo

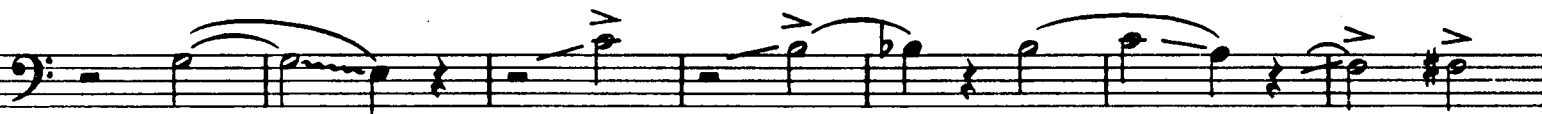


192 "CHIM CHIM CHEREE"



"SUPERCALIFRAGILISTICEXPIALIDOCIOUS"

212 Brightly (*in 2*)



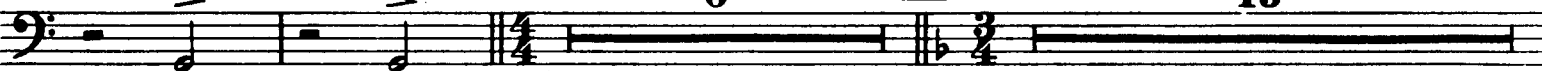
233 (VAUDEVILLE TAG)



"FEED THE BIRDS"

239 Much Slower (*in 4*)

Moderately Slow Waltz (*in 3*)



261

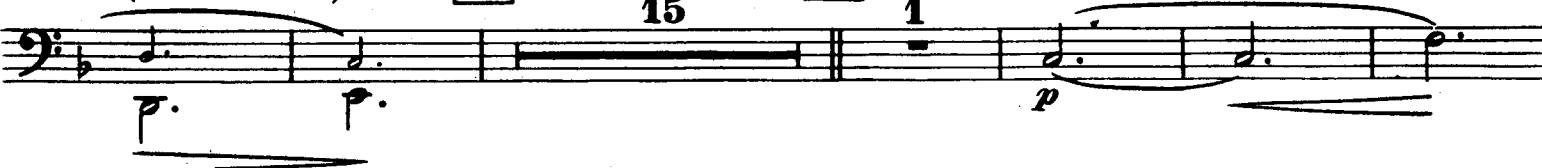
Like an Organ - no vibrato - poco rubato



(If no Bass: Trb.)

277 a tempo 15

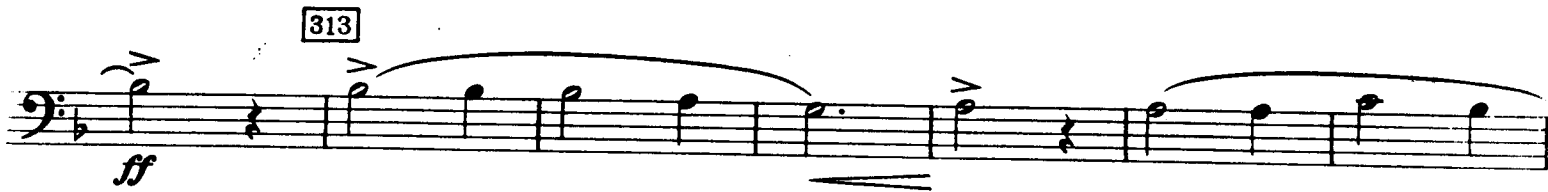
292 accel. to Moderately Bright Waltz 1



3e TROMBONE C

"LET'S GO FLY A KITE"

296 Moderately Bright Waltz



"THE DERBY"

328 ("JOLLY 'OLIDAY & A SPOONFUL OF SUGAR" PARAPHRASE)  
Galop (Presto possible)

