

1st BASSOON

MARY POPPINS

SELECTION

R. M. Sherman -
R. B. Sherman

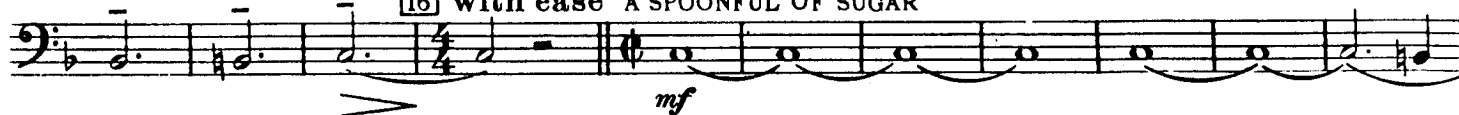
"FEED THE BIRDS"

Slowly, but not dragging



Moderately,

[16] with ease "A SPOONFUL OF SUGAR"



[25] Gradually faster and faster



a tempo

[33] Brightly, but not too fast (English Music Hall 2-beat)



[41]

cresc.

f



[51]

a tempo

mf

ff



[59]

1



Moderately Bright Waltz tempo (in 1)

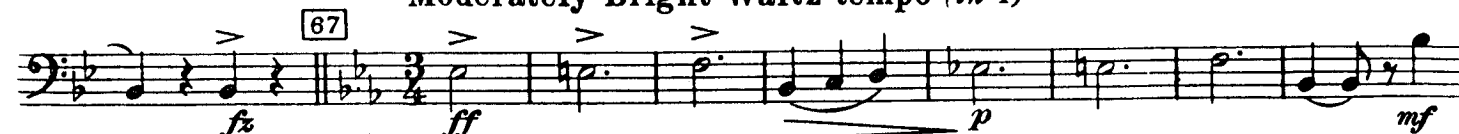
[67]

fx

ff

p

mf



[75]

"I LOVE TO LAUGH"

5

mf

mf

2



Copyright © 1963 by Wonderland Music Company, Burbank, Calif.

This arrangement Copyright c 1964 by Wonderland Used by permission

Walt Disney Music Co. Ltd., 52 Maddox Street, London, W.1.

for Holland Chappel & Co. Holland NV, Amsterdam.

authorised edition Molenaar NV, Wormerveer

03 1066.08



"SAND DANCE"

[105] Soft Shoe tempo

[109] "JOLLY 'OLIDAY"



Allegro con gusto

ritard. e cresc.



[160] Con gusto, (a little fuster)

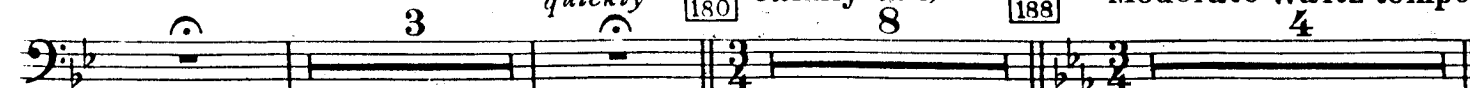
Slowly

(Fade away and ritard.)

Segue
quickly

[180] Calmly (in 1)

[188] Moderate Waltz tempo



"CHIM CHIM CHEREE"

1st BASSOON

200

192



mp



cresc.

"SUPERCALIFRAGILISTICEXPIALIDOCIOUS"

212 Brightly (in 2)

216



f

f



233 "VAUDEVILLE TAG"

fff

rit.

239 Much slower (in 4)

"FEED THE BIRDS"

245 Moderately Slow Waltz (in 3)



mf

f



Like an Organ- no vibrato- poco rubato

281



mf cresc.

277

a tempo



p

accel. to Moderately
Bright Waltz

"LET'S GO FLY A KITE"

Moderately Bright Waltz

292

296



f

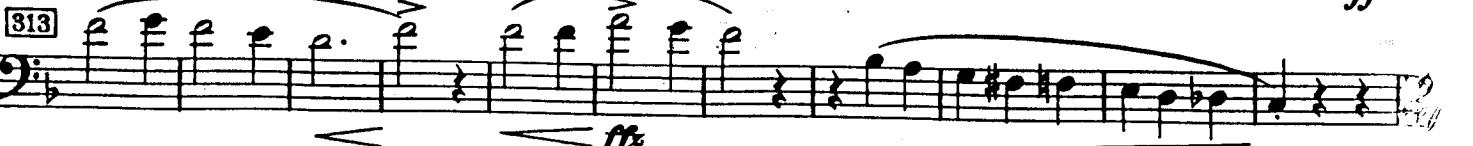
mf

f



cresc.

ff



ff

"THE DERBY"
 ("JOLLY 'OLIDAY" & A SPOONFUL
 OF SUGAR" PARAPHRASE)

324 Galop

328 Galop (*Presto possibile*)

